

# THE CORPORATION OF THE MUNICIPALITY OF KILLARNEY

## BY-LAW NO. 2026-25

### BEING A BY-LAW TO PROVIDE FOR THE COLLECTION, REMOVAL AND DISPOSAL OF WASTE, RECYCLABLE MATERIAL AND OTHER WASTE WITHIN THE MUNICIPALITY OF KILLARNEY

**WHEREAS** section 10 of the Municipal Act, 2001, as amended, provides that single-tier municipalities may pass By-laws to provide any service or thing that the municipality considers necessary or desirable for the public;

**AND WHEREAS** the Municipality of Killarney deems it desirable to establish, maintain and regulate a system for the collection, removal, recycling and disposal of Waste within the Municipality of Killarney;

**NOW THEREFORE** the Council of the Municipality of Killarney enacts as follows:

#### SECTION I – DEFINITIONS

- 1.1 **“Animal Carcass”** means the whole or partial body of a deceased animal, not including spoiled or rotten cuts of meat or parts of an animal that were intended for human or household pet consumption.
- 1.2 **“Approved Curbside Household Waste Container”** means a plastic bag that is securely tied or cinched closed that is no heavier than twenty-three (23) Kilos when filled with Waste and is no larger than 30” x 38”. Said bag may be contained within another container so long as the bag is easily removed from said container. Approved Curbside Household Waste Containers for the Killarney Village area must have an attached waste tag.
- 1.3 **“Approved Curbside Commercial Waste Container”** means a plastic bag that is securely tied or cinched closed that is no heavier than twenty-eight (28) Kilos when filled with Waste and is no larger than 30” x 50”. Said bag may be contained within another container so long as the bag is easily removed from said container. Approved Commercial Waste Containers for the Killarney Village area must have an attached waste tag.
- 1.4 **“Approved Curbside Recycling Container”** means any transparent plastic bag, no larger than 30” x 38”.
- 1.5 **“Ashes”** means the solid residue of any fuel for heating or cooking purposes, and soot or other cleanings from chimneys, fireplaces or heating appliances.
- 1.6 **“Brush”** means trees or any part thereof, bushes or any part thereof, and/or grass cuttings.
- 1.7 **“Brown Waste”** means any furniture, mattress, box springs, carpet or boat shrink wrap or other such items.
- 1.8 **“Commercial Waste”** means any Waste that is generated through the operations of a commercial business.
- 1.9 **“Construction Waste”** means any Waste generated during, or intended for use in the demolition, renovation or construction of any building, structure or property or parts thereof and shall include fill.
- 1.10 **“Collection Contractor”** means a person, limited company or corporation retained by the Municipality to collect, remove, transport and deliver Waste and recyclable materials.
- 1.11 **“Curbside Waste Box”** means a fully enclosed box constructed of a sturdy material that is no longer than two (2) metres, no taller than one (1) metre and no deeper than one (1) metre. Said box must be constructed competently to withstand destructive wildlife and limit smells attractive to wildlife from escaping. Said box must have a lid with a latching system to deter wildlife from accessing its contents but must be easy to open for collection. Said box may not be a refrigerator or other similar repurposed item.

- 1.12 **“Commercial User”** shall mean a person who owns or operates an industrial, institutional or commercial facility or business in the Municipality of Killarney.
- 1.13 **“Council”** Shall mean the elected council of the Municipality of Killarney.
- 1.14 **“Electronic Waste”** means any electronic Waste such as but not limited to monitors, televisions, computers, telephone and cellular devices, audio and video devices, printing and copying devices.
- 1.15 **“Hazardous Waste”** means any Waste that has the potential to harm anyone through inadvertent handling of said Waste and also means the usual containers for, or any other container that at one time held said Waste, empty or otherwise. This includes but is not limited to any materials that are or may become under any reasonable circumstances:
- i) Corrosive
  - ii) Toxic
  - iii) Reactive
  - iv) Combustible
  - v) Flammable
  - vi) Explosive
  - vii) Pressurized
  - viii) Sharp (e.g. glass, knives, sewing needles, etc...)
  - ix) Biohazardous (excluding household pet Waste and dirty diapers)
  - x) Carcinogenic.
- 1.16 **“Household Waste”** means all waste generated during the usual daily activities of an individual but does not include bulky waste, scrap metal, commercial waste, construction waste, brush, hazardous waste, electronic waste, recyclable materials, liquid waste or animal carcasses.
- 1.17 **“Landfill Site”** means the sites located at **1111 Hwy 637, 998 Hartley Bay Road and 2780 Highway 69**, designated and operated by the Municipality for the disposal or transfer of Waste in accordance with the provisions of this By- law and the terms and conditions of a Certificate of Approval issued by the Ministry of the Environment, Parks and Conservation.
- 1.18 **“Residential User”** shall mean any person who owns real property used for residential purposes and is a rate payer in the Municipality of Killarney or any person that is a tenant to such a person and shall not include the owners of vacant land.
- 1.19 **“Landfill Site Manager”** shall mean the person duly appointed and responsible for supervision and control of operations at a Landfill or Recycling Site as defined or a person working at the site on their behalf.
- 1.20 **“Liquid Waste”** means any Waste that does not comply with the slump test as per the test method set out in Ontario Regulation 347 in Schedule 9, as amended pursuant to the Environmental Protection Act, R.S.O. 1990, c.E.1 9.
- 1.21 **“Municipality”** means the Municipality of Killarney.
- 1.22 **“Municipal Law Enforcement Officer”** means anyone appointed by the Municipality to enforce the provisions of this By-Law.
- 1.23 **“Non-Collectable Waste”** shall mean any item or items defined in ‘Schedule F’ that will not be picked up at the curbside;
- 1.24 **“Recyclable Materials”** means any material that is accepted by the Municipality’s recycling program.
- 1.25 **“Scavenging”** shall mean the process of interfering with a municipal waste disposal site, landfill or waste left out for curbside collection;
- 1.26 **“Designated Area”** shall mean an area at the Landfill/Recycling Site, designated for a particular purpose;
- 1.27 **“Scrap Metal”** means any materials with metal content including electrical appliances, aluminum siding, bedsprings and metal beds and/or articles acceptable to the scrap metal program.
- 1.28 **“Tipping Fees”** means a waste disposal fee imposed by the Municipality.
- 1.29 **“Vacant Landowner”** means any owner of real property that could be described as vacant or that is not defined as a Residential or Commercial user.

- 1.30 **“Waste”** means any garbage, refuse and other unwanted materials.
- 1.31 **“Municipal Waste Container”** means a container or vehicle that is placed at a location by the Municipality for the disposal of Household Waste or Recyclable Materials.
- 1.32 **“White Goods”** shall mean any appliance such as cook stoves, washing machines or dryers or other items deemed by the municipality to be ‘White goods’ but shall not include any appliance that contains freon.
- 1.33 **“Unacceptable Waste”** shall mean waste defined in ‘Schedule F’ that shall not be accepted at a municipal landfill site.

## **SECTION II - PAY-PER-BAG AND TIPPING FEES**

- 2.1 No Person shall deposit or dispose of untagged waste at the Killarney Village Landfill site.
- 2.2 Residential Users of the Killarney Village Landfill site shall be provided with 104 Waste Tags per year at no cost. Tags shall be provided on a prorated basis to new Residential Users.
- 2.3 Commercial Users of the Killarney Village Landfill site shall be provided with 208 Waste Tags per year at no cost. Tags shall be provided on a prorated basis to new Commercial Users.
- 2.4 Residential Users of the Killarney Village Landfill site waste tags in excess of 104 shall be purchased from the Municipal Office at the cost of \$2.00 per tag.
- 2.5 Commercial Users of the Killarney Village Landfill site waste tags in excess of 208 shall be purchased from the Municipal Office at the cost of \$5.00 per tag.
- 2.6 New Users of the Killarney Village Landfill site may pick up their tags at the Municipal Office upon confirmation of the purchase of property within the Municipality of Killarney.
- 2.7 No Residential Users in Killarney village shall leave out for collection or deposit at a landfill site any waste in containers larger than the size of an approved household waste container unless sufficient waste tags are applied to the container.
- 2.8 No Commercial Users shall deposit at a landfill site any waste in containers larger than the size of an approved commercial waste container unless sufficient waste tags are applied to the container.
- 2.9 Vacant Landowners who wish to dispose of waste within the municipality shall purchase a waste tag from the municipality for every container of waste that they wish to dispose of and will be required to provide proof of landownership within the municipality if requested.
- 2.10 Tipping fees shall be paid in advance at the Municipal office or at 998 Hartley Bay Road and 2780 Highway 69, where a proper ticket will be issued to the user. All tipping fees shall be paid as outlined in ‘Schedule C’ of this By-Law.
- 2.11 The Municipal staff has the right to impose a Tipping Fee for the disposal of certain waste materials including but not limited to all items described in ‘Schedule C’ of this By-Law. The owner of said Waste shall first remit said Tipping Fee before entering the Site. No person shall fail to remit a tipping fee before entering a landfill site.
- 2.12 The Municipality of Killarney reserves the right to waive tipping fees for non-collectable waste items on certain dates determined by the municipality.

## SECTION III – LANDFILL RESTRICTIONS

### 3.1 While at any Landfill Site:

- a. No person shall deposit or dispose of any Waste other than Waste originating from within the Municipality of Killarney.
- b. The Municipal staff shall have the authority to direct anyone to leave the site if that person fails to follow instructions for the disposal of waste or is behaving in a threatening or harassing manner.
- c. No person shall allow an unsecured load of waste to be brought to a landfill site. All waste must be secured in such a manner so as to prevent the loss or scattering of said waste during its transport to the landfill site.
- d. Every person disposing of Waste shall deposit the Waste in the areas designated by the Municipal staff.
- e. Every person shall first report to the Municipal staff when entering the landfill site. The Municipal staff has the right to inspect all material entering the landfill site and may refuse any material or Waste.
- f. No person shall prevent Municipal staff from inspecting all material entering the landfill site.
- g. Every person depositing or disposing of Waste shall, upon request from any Municipal staff, provide proof of their residence.
- h. Every person who enters a landfill site for the purpose of dumping, depositing or otherwise disposing of any type of Waste shall follow any and all instructions given by any Municipal staff as they pertain to waste disposal.
- i. No person shall deposit or otherwise dispose of any waste at a Landfill site except during the advertised hours of operation.
- j. No person shall deposit or otherwise dispose of any waste at the gates of a landfill site.
- k. No person shall deposit or dispose of any Hazardous Waste at a landfill site unless it is specifically allowed by the Municipality.
- l. No person shall deposit or dispose of any unacceptable waste at a landfill site.
- m. All on-site health, sanitary and site operations shall be maintained in accordance with the current *Environmental Compliance Approval* issued by the Ministry of the Environment.
- n. Regulations of the Ministry of Environment, the *Environmental Protection Act* and the Municipality of Killarney's *Environmental Compliance Approval* document shall be observed at all times.
- o. The Municipality reserves the right to restrict access to any individual person, organization, service or firm as a result of contravention(s) to this By-law.
- p. No person shall dispose of an animal carcass.

### 3.2 No person shall deposit Waste in any location within the Municipality except at the Landfill Site or any Waste Containers established in accordance with this By-Law unless it is placed out for curbside collection in accordance with Section 4 of this By-Law.

- 3.3 No person shall dispose of any cardboard or cardboard boxes that are not opened and/or flattened while at the Landfill Site, for Curbside Collection or in any other Waste Containers.
- 3.4 Recyclables must be placed in approved curbside recycling containers. There is no limit on the amount of approved curbside recycled containers containing recyclable waste that will be accepted at a landfill site.
- 3.5 No person shall deposit or dispose of any construction waste at the landfill site at 1111 Highway 637.
- 3.6 No person shall dispose of boat shrink wrap or similar material at a landfill site unless contained in an approved plastic wrap material container and is:
  - a. Free of ropes, vents, straps or other debris
  - b. Properly deposited into the container to allow for compression
  - c. Properly sealed or tied so as to prevent water, debris or pests from entering the container.

Approved containers shall be purchased from the municipal office or landfill sites at 2780 Highway 69 and 998 Hartly Bay Road at a cost of \$30.00/per container.

- 3.7 No Person shall deposit more than two (2) bags of waste per household, per day at the landfill sites located at 998 Hartley Bay Road and 2780 Highway 69.
- 3.8 No person shall scavenge, interfere with, remove, exchange or scatter any Waste found at the Landfill Site, in Waste Containers or Waste that has been placed out for curbside collection.

#### **SECTION IV – CURBSIDE GARBAGE/RECYCLING COLLECTION**

- 4.1 The Municipality has the authority to designate what kinds of materials are to be collected through curbside collection and how much of each kind of material may be collected per household or business, as outlined in ‘Schedule F’. The Municipality has the authority to determine what areas of the municipality curbside collection will take place as outlined in ‘Schedule F’.
- 4.2 Collection Day will occur on a set, regular schedule as determined by the Municipality but may not occur if a collection day falls on a statutory holiday as determined by the Municipality. If a collection day falls on such a day the Municipality will inform residents of when the next collection day will be and will attempt to make the next collection day be as soon as is practical.
- 4.3 In the event of a hazardous weather event that inhibits the ability to safely operate a curbside collection vehicle or safely collect curbside collection, curbside collection will not take place until it is safe to do so. The Municipality will inform residents of when the next curbside collection will occur and will attempt to make the next collection day be as soon as is practical.
- 4.4 Waste for collection must be placed in a location where it is readily visible from the road and able to be easily and safely reached for collection. Waste that is not visible from the road or not easily and safely reachable will not be collected.
- 4.5 No person shall place Waste:
  - i) in a location that disrupts vehicle or pedestrian traffic;
  - ii) on public roadways or sidewalks; or,
  - iii) in a location that disrupts the use of shared driveways for other residents also using said shared driveway.

- 4.6 Every User required to use or making use of curbside garbage/recycling collection shall comply with the following:
- a. No person shall place any Hazardous Waste out to be removed for curbside collection.
  - b. Only the approved amount of Waste specified in 'Schedule F' or waste that has been appropriately tagged with a municipal garbage tag for the Killarney Village area will be picked up.
  - c. All Waste that is placed out for curbside collection must be sorted. All Recyclable Waste must be placed in an Approved Curbside Recycling Container. All Household Waste must be placed in an Approved Curbside Household Waste Container. Waste that is not sorted and placed in appropriate containers will not be collected.
  - d. No person shall cause or allow any uncollected Waste and/or any curbside waste container to remain curbside after **6:00** PM the same day that collection was scheduled to occur unless they are kept securely in a Curbside Waste Box.
  - e. No person shall cause or allow any Waste to be placed curbside before **6:00** AM the same day that collection is scheduled to occur unless it is kept securely in Curbside Waste Box.
  - f. All Waste that is placed out for curbside collection must originate from the household whose property it is located on. No person shall place or allow the Waste from one household on another household's property.
  - g. If a Curbside Waste Box cannot be opened or accessed easily, Waste will not be collected. The lid of the Curbside Waste Box as well as a path from the roadway to the Curbside Waste Box must be kept clear of snow and other obstructions so as to permit easy removal of Waste for collection.
  - h. No person shall cause or allow more than one Curbside Waste Box to be located on their property.
  - i. No person shall allow a Curbside Waste Box to become soiled with loose debris, waste or any other materials that could attract wildlife.
  - j. No person shall use any container as a curbside waste box unless that container meets the definition of a curbside waste box in Section 1.11 of this By-Law.
  - k. No Residential User shall use any container for depositing waste except a container defined as an approved curbside household waste container.

## **SECTION V - ENFORCEMENT**

- 5.1 Every person who contravenes any provision of this By-Law is guilty of an offence and upon conviction shall be liable to a fine prescribed and recoverable under the provisions of the *Provincial Offences Act*, R.S.O. 1990, c. P.33, as amended, for each offence committed.
- 5.2 The Administrative Monetary Penalty System By-law applies to each administrative penalty issued pursuant to this Bylaw.
- 5.3 No person shall hinder or otherwise obstruct, nor attempt to hinder or obstruct, either directly or indirectly, an Officer, an employee and/or agent of the Municipality in the lawful exercise of a power or duty under this By-Law.
- 5.4 Each person who contravenes any provision of this By-law shall, upon issuance of a penalty notice in accordance with Administrative Monetary Penalty System By-law, be liable to pay to the Municipality an administrative monetary penalty.

- 5.5 Upon registering a conviction for a contravention of any provision of this By-Law, the Provincial Offences Court may, in addition to any other remedy and to any penalty imposed by this By-Law, make an order prohibiting the continuation or repetition of the offence by the person convicted.

#### **SECTION VI – SEVERABILITY**

- 6.1 Should a court of competent jurisdiction declare a part or whole of any provision of this By- Law to be invalid or of no force and effect, the provision or part is deemed severable from this By-Law, and it is the intention of Council that the remainder survive and be applied and enforced in accordance with its terms to the extent possible under law.

#### **SECTION VII – SCHEDULES**

- 7.1 Schedules “A”, “B”, “C”, “D”, “E” and “F” shall be deemed to form part of this by-law.

#### **SECTION VIII – AUTHORITY**

- 8.1 Any and all By-laws inconsistent with this By-law are hereby repealed.
- 8.2 This By-Law shall come into force and take effect on the day it is passed.

***READ A FIRST, AND TAKEN AS READ A SECOND AND THIRD TIME AND FINALLY PASSED IN OPEN COUNCIL THIS 13<sup>TH</sup> DAY OF MAY, 2026.***

***ORIGINAL DOCUMENT SIGNED***

---

***Michael Reider, Mayor***

***ORIGINAL DOCUMENT SIGNED***

---

***Candy Beauvais, Clerk-Treasurer***

*By signing this By-law on May 13<sup>th</sup>, 2026, Mayor Michael Reider will not exercise Strong Mayor Powers to veto this By-law.*

**SCHEDULE "A"**  
**WASTE MANAGEMENT BY-LAW 2026-25**  
**MUNICIPALITY OF KILARNEY**

**PART 1 – PROVINCIAL OFFENCE ACT FINES**

<b>ITEM</b>	<b>COLUMN 1 SHORT FORM WORDING</b>	<b>COLUMN 2 PROVISION CREATING OR DEFINING OFFENCE</b>	<b>COLUMN 3 SET FINES</b>
1.	Deposit or dispose of untagged waste	Section 2.1	50.00
2.	Residential User - Leave out for collection or deposit waste in containers larger than approved household waste container	Section 2.7	150.00
3.	Commercial User - Deposit waste in containers larger than approved household waste container	Section 2.8	150.00
4.	Fail to remit tipping fee	Section 2.11	200.00
5.	Deposit waste from outside of the municipality	Section 3.1 a.	250.00
6.	Allow an unsecured load of waste to be brought to the landfill site	Section 3.1 c.	100.00
7.	Fail to deposit waste in designated area	Section 3.1 d.	150.00
8.	Fail to report to municipal staff	Section 3.1 e.	250.00
9.	Prevent staff from inspecting waste materials	Section 3.1 f.	250.00
10.	Fail to provide proof of residence	Section 3.1 g.	250.00
11.	Fail to follow direction from staff	Section 3.1 h.	350.00
12.	Deposit waste at landfill site outside of hours of operation	Section 3.1 i.	250.00
13.	Deposit waste at the gates of a landfill site	Section 3.1 j.	250.00
14.	Deposit or dispose of hazardous waste	Section 3.1 k.	400.00
15.	Deposit or dispose of unacceptable waste	Section 3.1 l.	250.00
16.	Deposit or dispose of an animal carcass	Section 3.1 p.	200.00
17.	Deposit waste at any location except a landfill site	Section 3.2	200.00
18.	Dispose of unopened or unflattened cardboard	Section 3.3	75.00
19.	Deposit or dispose of construction waste at 1111 HWY 637 landfill	Section 3.5	150.00
20.	Dispose of boat shrink wrap outside of appropriate container.	Section 3.6	150.00
21.	Deposit more than 2 bags of waste per household per day at 998 Hartley Bay Road	Section 3.7	75.00
22.	Deposit more than 2 bags of waste per household per day at 2780 Hwy 69	Section 3.7	75.00
23.	Scavenge, interfere with, remove, exchange or scatter waste	Section 3.8	100.00
24.	Place waste in a location that disrupts vehicle or pedestrian traffic	Section 4.5 i)	125.00

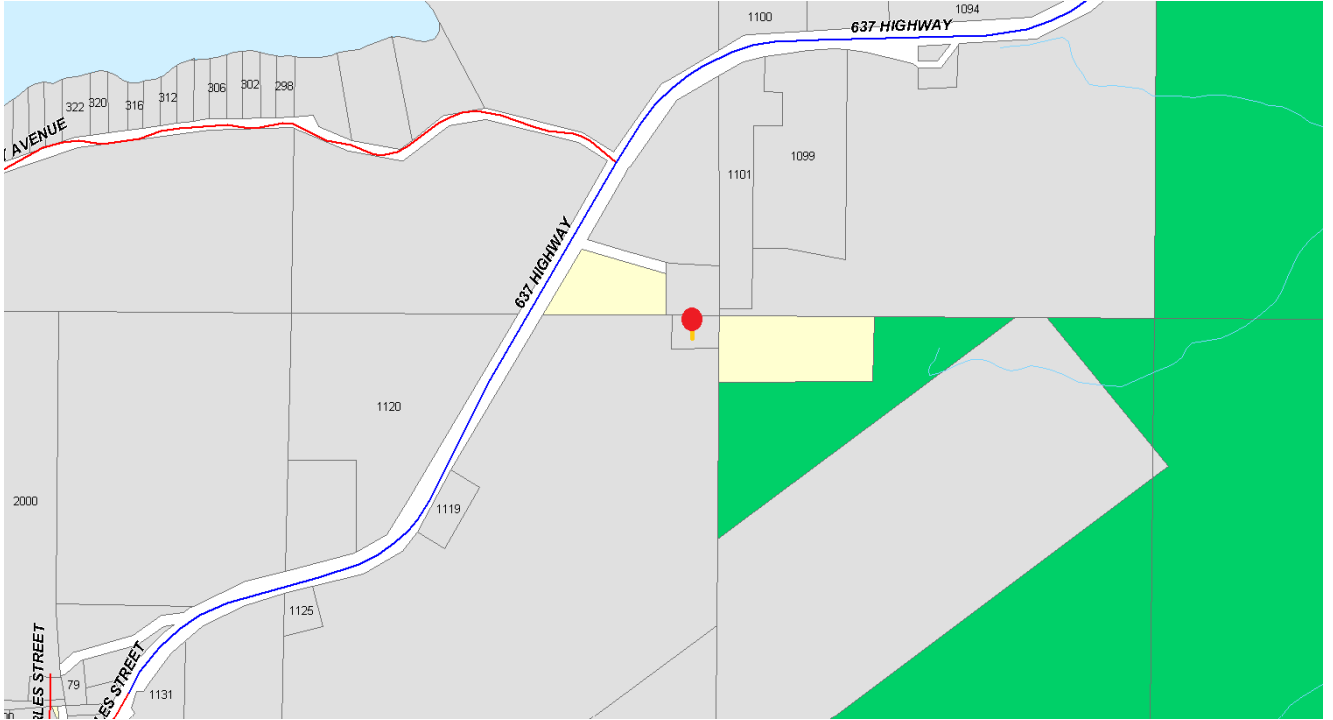
25.	Place waste on a public roadway or sidewalk	Section 4.5 ii)	75.00
26.	Place waste in a location that disrupts the use of a shared driveway	Section 4.5 iii)	350.00
27.	Place hazardous waste out for curbside collection	Section 4.6 a.	250.00
28.	Cause or allow uncollected waste or a curbside waste container to remain curbside after 6:00pm	Section 4.6 d.	150.00
29.	Cause or allow a curbside waste container to be placed curbside before 6:00am	Section 4.6 e.	150.00
30.	Place or permit the placing of waste from one household on another household's property	Section 4.6 f.	150.00
31.	Cause or permit more than one curbside waste box on a property	Section 4.6 h.	250.00
32.	Allow a curbside waste box to become soiled	Section 4.6 i.	135.00
33.	Use a container as a curbside waste box that does not meet the definition of curbside waste box	Section 4.6 j.	100.00
34.	Residential User - use a container other than a approved household waste container for depositing waste	Section 4.6 k.	150.00
35.	Obstruct an Officer	Section 5.3	600.00

**NOTE:** Penalty Provisions for the offences indicated above is Section 6.1 of the By-law 2026-25, a certified copy of which has been filed.

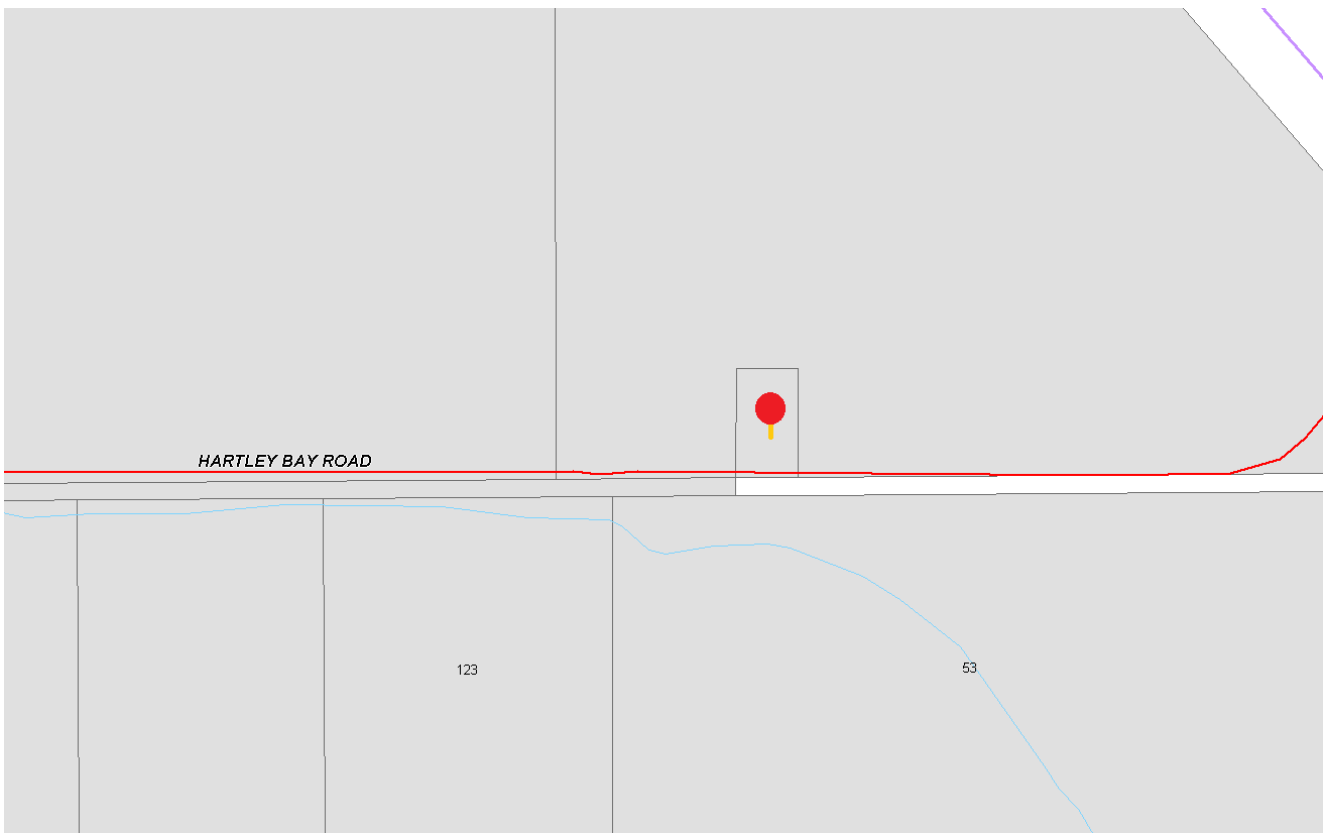
**SCHEDULE "B"**  
**WASTE MANAGEMENT BY-LAW 2026-25**  
**MUNICIPALITY OF KILARNEY**

**"LANDFILL SITE LOCATIONS"**

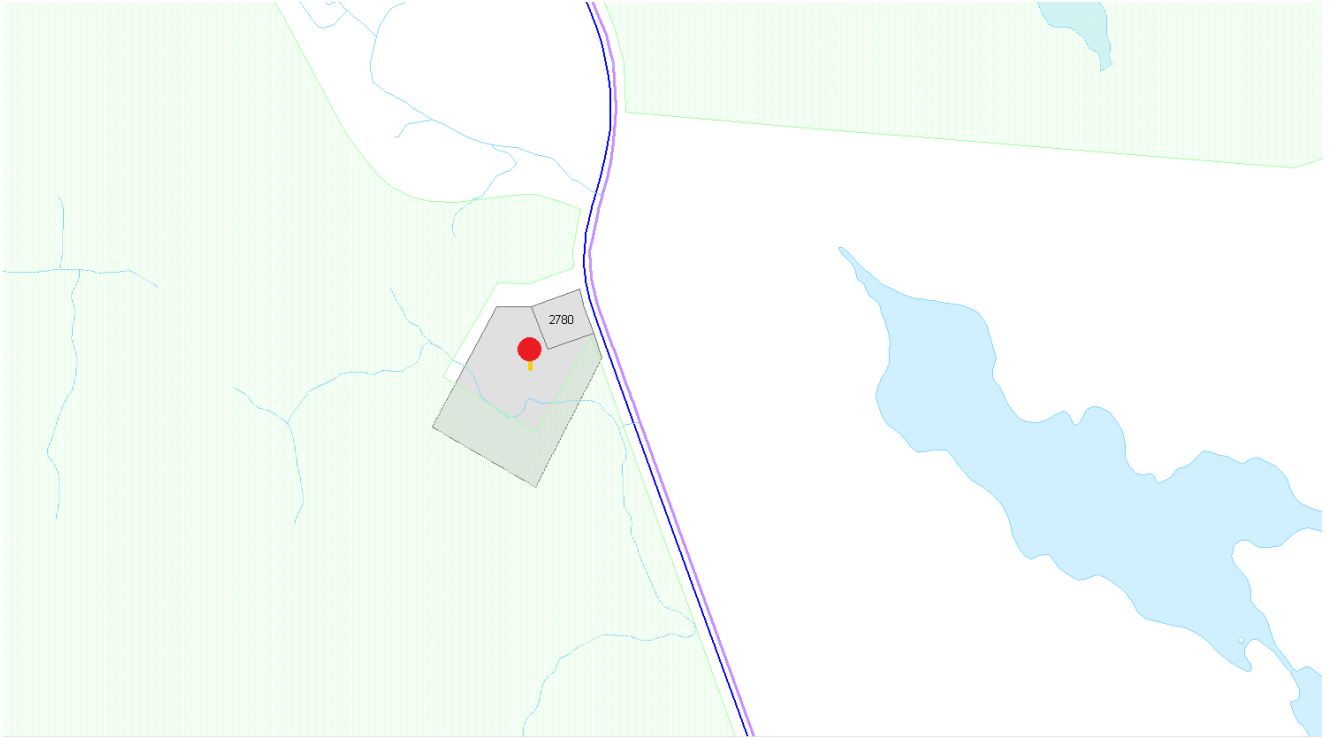
**1111 Highway 637**



**998 Hartley Bay Rd**



**2780 Highway 69**



**SCHEDULE "C"**  
**WASTE MANAGEMENT BY-LAW 2026-25**  
**MUNICIPALITY OF KILARNEY**  
**"Tipping Fees"**

PLEASE NOTE: This is not an all-inclusive listing. If items do not fall under the categories listed below, they may or may not be accepted. Contact the Public Works Department for clarification. A minimum tipping fee of \$10.00 is applied for each load or item requiring a fee. Fees are subject to periodic review.

***Brown Waste – Per Item***

Carpet	\$25.00 each
Mattress or box spring	\$25.00 each
Furniture – e.g., chair, sofa, loveseat, table	\$25.00 each

***Brown Waste, Demolition Waste, Construction Waste – Per Load***

Car	\$30.00 each
Pick-up	\$70.00 each
4'x8'	\$75.00 each
5'x10'	\$110.00 each
5'x12'	\$135.00 each
6'x10'	\$135.00 each
6'x12'	\$160.00 each
6'x14'	\$185.00 each
6'x16'	\$210.00 each
6'x18'	\$240.00 each
6'x20'	\$270.00 each
Tandem/dump truck	\$240.00 each
Tri-axle dump truck	\$360.00 each

***Brown Waste, Demolition Waste, Construction Waste – Per 1/2 Load***

Car	\$15.00 each
Pick-up	\$35.00 each
4'x8'	\$40.00 each
5'x10'	\$55.00 each
5'x12'	\$70.00 each
6'x10'	\$70.00 each
6'x12'	\$80.00 each
6'x14'	\$95.00 each
6'x16'	\$105.00 each
6'x18'	\$120.00 each
6'x20'	\$135.00 each
Tandem/dump truck	\$120.00 each
Tri-axle dump truck	\$180.00 each

***Bulky Items***

Pressure tank, hot water tank, barbeque	No charge
---	-----------

***Other Items***

Items containing Freon	\$55.00 each
Shrink Wrap (bagged)	\$30.00 Per Bag
Household Waste	No charge
White Goods	No charge
Recyclable items	No charge
Metal items	No charge

***Tires***

Regular passenger vehicle	No charge
Transport	No charge

**SCHEDULE “D”  
WASTE MANAGEMENT BY-LAW 2026-25  
MUNICIPALITY OF KILARNEY**

**Landfill/Recycling Centre Hours, Curbside Collection Service**

**Landfill/Recycling Centre Hours of Operation (1111 Highway 637)**  
Summer hours of operation begin the Sunday before Victoria Day Weekend.  
Winter hours begin the Sunday after Thanksgiving Day.

***Summer Hours***

Mon	9:00 am – 11:00 am and 1:30 pm – 3:30 pm
Tue	Closed ( <i>Except after holiday Mondays, when the site will be open 1:30 pm – 3:30 pm</i> )
Wed	1:30 pm – 3:30 pm
Thu	Closed
Fri	1:30 pm – 3:30 pm
Sat	9:00 am – 11:00 am and 1:30 pm – 3:30 pm
Sun	8:00 am – 12:00 pm and 2:00 pm – 6:00 pm

***Winter Hours***

Tue	1:30 pm – 3:30 pm
Sat	1:30 pm – 3:30 pm

**Landfill/Recycling Centre Hours of Operation (988 Hartley Bay Road)**  
Summer hours of operation begin the Sunday before Victoria Day Weekend.  
Winter hours begin the Sunday after Thanksgiving Day.

***Summer Hours***

Mon	9:00 am – 1:00 pm
Tue	Closed ( <i>Except after holiday Mondays, when the site will be open 1:30 pm – 3:30 pm</i> )
Wed	2:00 pm– 6:00 pm
Thu	Closed
Fri	2:00 pm – 6:00 pm
Sat	9:00 am – 1:00 pm
Sun	8:00 am – 12:00 pm

***Winter Hours***

Wed	12:00 pm – 4:00 pm
Sun	8:00 am– 12:00 pm

**Landfill/Recycling Centre Hours of Operation (2780 Highway 69)**

Summer hours of operation begin the Sunday before Victoria Day Weekend.

Winter hours begin the Sunday after Thanksgiving Day.

***Summer Hours***

Mon	8:00 am – 12:00 pm and 2:00 pm – 6:00 pm
Tue	Closed ( <i>Except after holiday Mondays, when the site will be open 1:30 pm – 3:30 pm</i> )
Wed	8:00 am – 12:00 pm
Thu	Closed
Fri	8:00 am – 12:00 pm
Sat	2:00 pm – 6:00 pm
Sun	2:00 pm – 6:00 pm

***Winter Hours***

Tue	12:00 pm – 3:00 pm
Sun	1:00 pm – 4:00 pm

**Curbside Collection Service**

For household waste: every Tuesday, beginning at 8 am

For household (blue box) recycling: every Tuesday, beginning at 8 am

**SCHEDULE “E”  
WASTE MANAGEMENT BY-LAW 2026-25  
MUNICIPALITY OF KILARNEY**

**“Waste Diversion, Blue Box, and Recyclable Items”**

- Clean wood (wood that has not been painted, stained or treated)
- Brush
- White goods
- Scrap Metal (except those for which a tipping fee must be paid – see ‘Schedule C’)
- Electronic waste: See the Electronics Recycling Guide available at the municipal office and on the municipal website, describing acceptable electronics.
- Household (“blue box”) items: See the Recycling Guide available at the municipal office and on the municipal website, describing accepted recyclables and how to prepare them.

**SCHEDULE "F"**  
**WASTE MANAGEMENT BY-LAW 2026-25**  
**MUNICIPALITY OF KILARNEY**

**Non-Collectible Waste**

Items that will not be picked up at the curb include:

1. Items that require tipping fees – see 'Schedule C'
2. Untagged waste
3. Waste not contained in appropriate bags
4. Unacceptable waste

**Unacceptable Waste**

Items that are not acceptable at the Landfill/Recycling Site include, but are not limited to:

- Stumps
- automobiles
- vehicle parts
- recreational vehicles - snow machines, canoes, campers, etc.
- recreational vehicle parts
- cement
- asphalt
- fluorescent bulbs
- Hazardous Waste